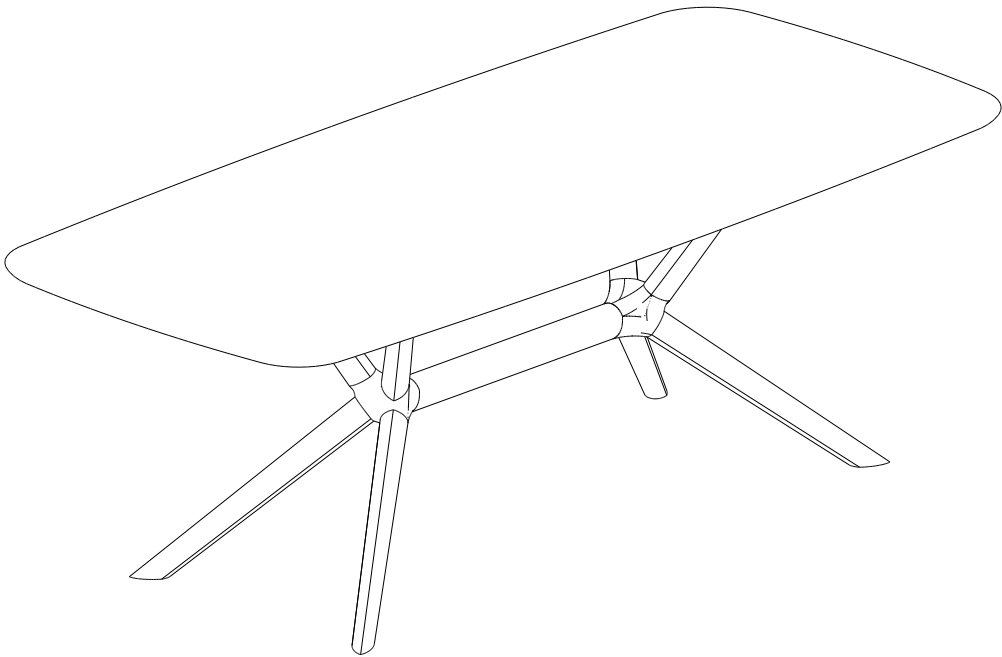


X DINING TABLE

CODE	DESCRIPTION
50027	OAK X DINING TABLE 200/100/76
50028	OAK X DINING TABLE 224/100/76
50029	OAK X DINING TABLE 250/100/76

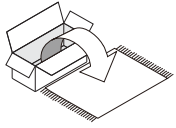


X DINING TABLE

ASSEMBLY INSTRUCTIONS FOR DINING TABLE INSTALLATION



NOTE



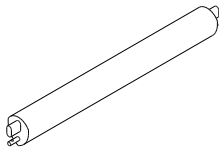
- CAREFULLY OPEN THE CARTON,
- REMOVE CONTENTS AND LAY OUT ON CARPET OR THE PACKAGING CARTON BOX OR OTHER PROTECTIVE SURFACE TO AVOID DAMAGE.
- CHECK PACKAGE CONTENTS TO ASSURE ALL THE NECESSARY HARDWARE AND PARTS ARE RECEIVED UNDAMAGED.
- DO NOT USE DAMAGE OR DEFECTIVE PARTS/HARDWARE.
- CONTACT ETHNICRAFT FOR ANY MISSING PART AND/OR HARDWARE.



- READ ASSEMBLY INSTRUCTIONS BEFORE INSTALLATION, CAREFULLY FOLLOWING THE DIRECTIONS GIVEN.
- SEEK PROFESSIONAL ADVICE IF YOU ARE NOT FAMILIAR WITH DIRECTIONS OF THIS INSTALLATION OR IF YOU HAVE ANY DOUBTS ABOUT SAFETY.



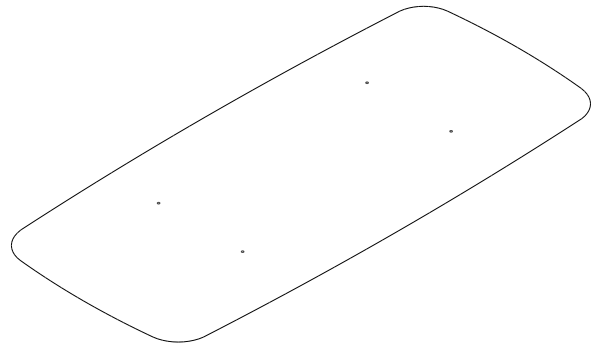
- IT IS ADVISED TO CONDUCT THIS ASSEMBLY WITH A MINIMUM OF 2 PERSONS.



C MIDDLE STRETCHER 1 piece

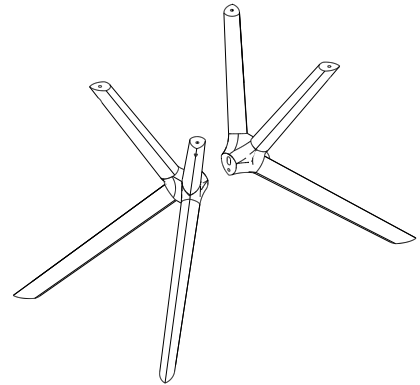
CODE	DESCRIPTION
P4859	MIDDLE STRETCHER FOR 200 LENGTH
P4777	MIDDLE STRETCHER FOR 224 LENGTH
P4970	MIDDLE STRETCHER FOR 250 LENGTH

PARTS TO ASSEMBLE



A TABLE TOP 1 piece

CODE	DESCRIPTION
P4858	TABLE TOP 200x100
P4776	TABLE TOP 224x100
P4969	TABLE TOP 250x100



B LEGS 2 pieces (left & right)

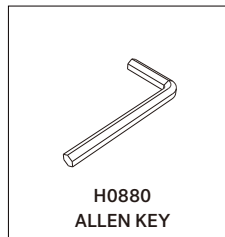
CODE	DESCRIPTION
P4778	LEG

HARDWARE ENCLOSED

<p>H2115 ALLEN SCREW M6x30 DIN 912 (4pcs)</p>	<p>H2074 WASHER M6 DIN 125 (4pcs)</p>
---	---

TOOL

(Included in package)



TOOL

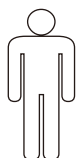
(Not included in package)



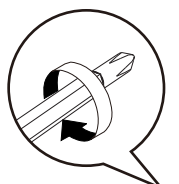
SYMBOLS



DIRECTION


NUMBER OF
PERSONS NEEDED


USE HAND

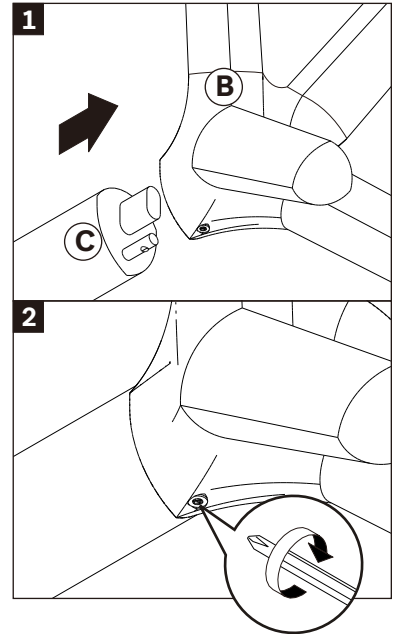
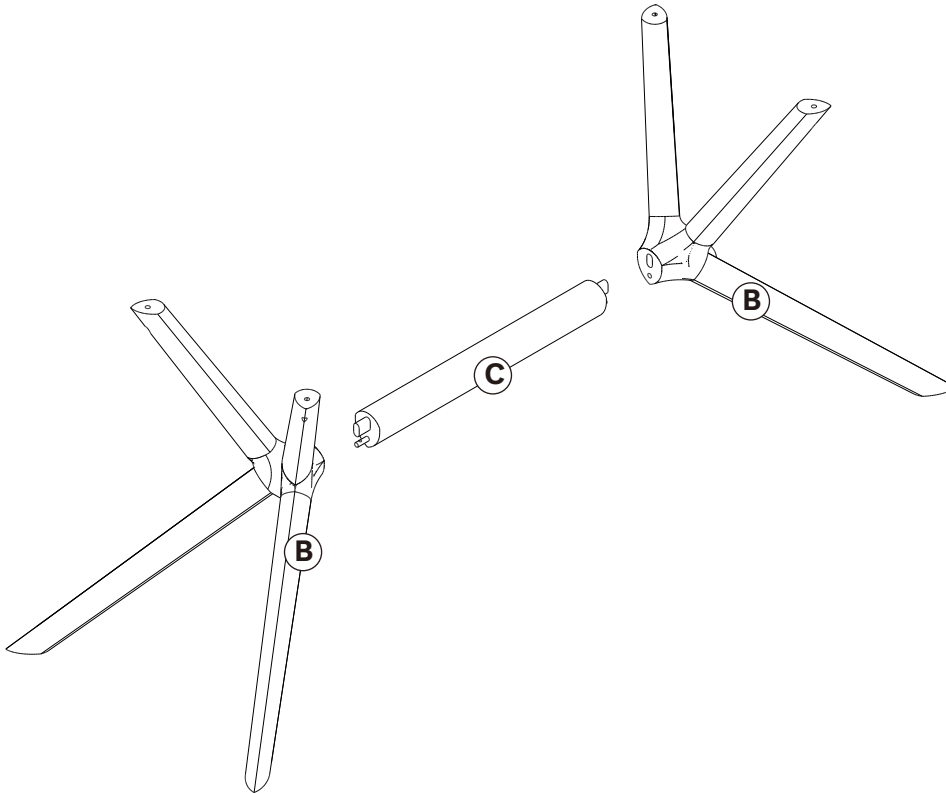

USE ALLEN KEY
TO TIGHTEN

USE SCREWDRIVER
TO TIGHTEN

X DINING TABLE

ASSEMBLY INSTRUCTIONS FOR DINING TABLE INSTALLATION

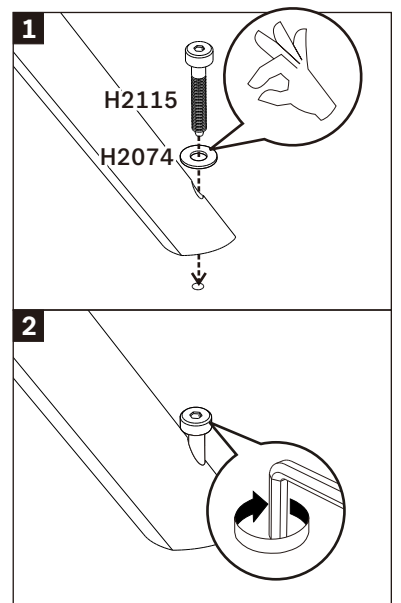
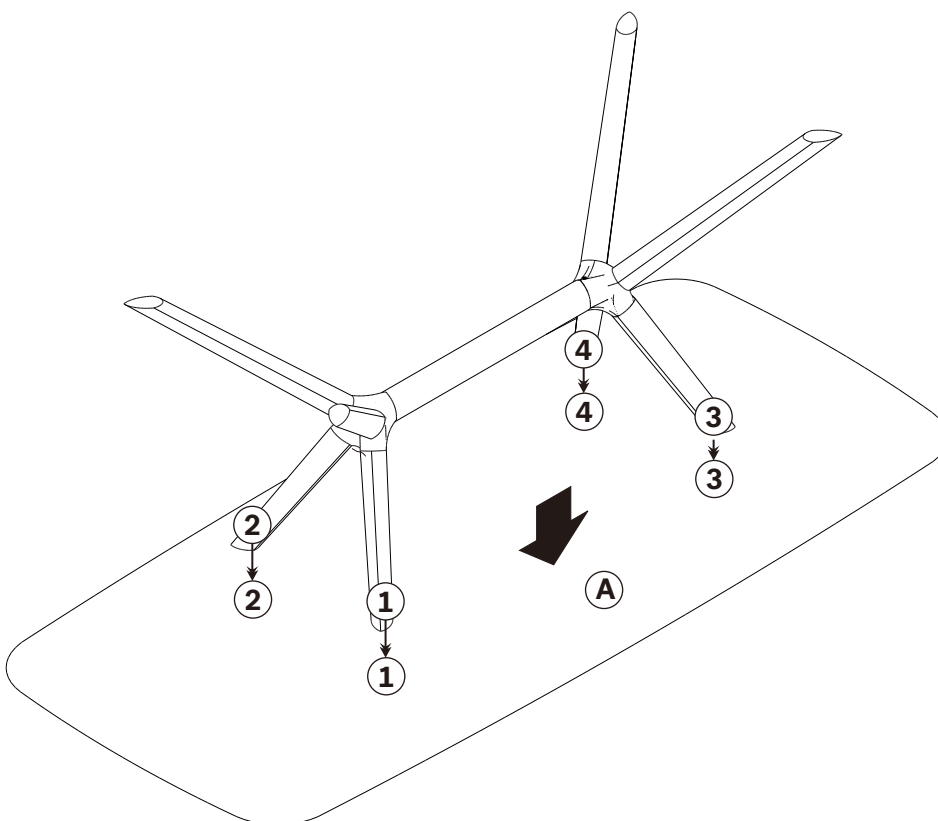


A INSTALLING STRETCHER TO THE LEGS



- ! - REPEAT THIS STEPS FOR EACH LEG
- DO NOT TIGHTEN FULLY

B INSTALLING LEGS TO TABLE TOP



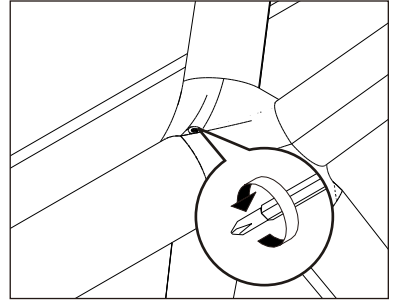
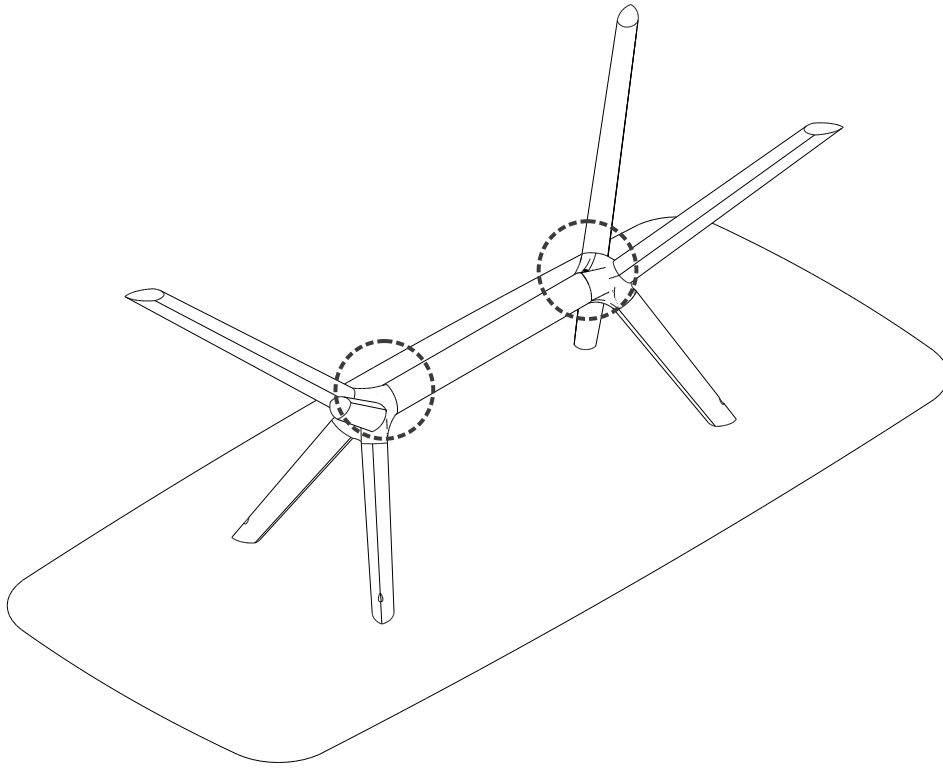
- ! - USE ALLEN SCREW M6x30 (4X)
- USE WASHER M6 (4X)
- TIGHTEN FULLY

X DINING TABLE

ASSEMBLY INSTRUCTIONS FOR DINING TABLE INSTALLATION



C ADJUST SCREWS TO TIGHTEN



! - TIGHTEN FULLY

D FINISH

